

HER VOICE

DATE: 13 October 2017



About Our Work

SHRH Africa Trust (SAT)

- SAT has a “School without Walls” methodology (SWW) for supporting and enhancing the capacity of non-governmental and community-based organizations, and has collaborated with over 300 civil society organizations (CSOs) over 25 years to enhance organizational capacity. **SAT has a strong focus on gender equality, women’s rights and health** and a flagship program that highlights six key strategies encompassed in:

#THEGIRLPLAN

About Our Work

Eastern Africa National Networks of AIDS Service Organizations (EANNASO)

- EANNASO is a regional network comprised of seven National networks from East African countries: Kenya, Uganda, Tanzania (including Zanzibar), Rwanda, Burundi, Ethiopia and South Sudan.
- Through its membership, EANNASO brings together more than 5,600 CSO and community groups aiming at strengthening and coordinating civil society and community groups to effectively contribute to ending new HIV infections and TB by 2030 in line with their national responses through capacity development and policy advocacy. In its current strategy 2017 - 2021 EANNASO takes a bold step in **integrating TB**, focusing on **SRHR, AGYW, Youth, Key and Vulnerable Populations** and a **human rights approach to health**.
- EANNASO is currently hosting the Anglophone Africa CRG Regional Communication and Coordination Platform.



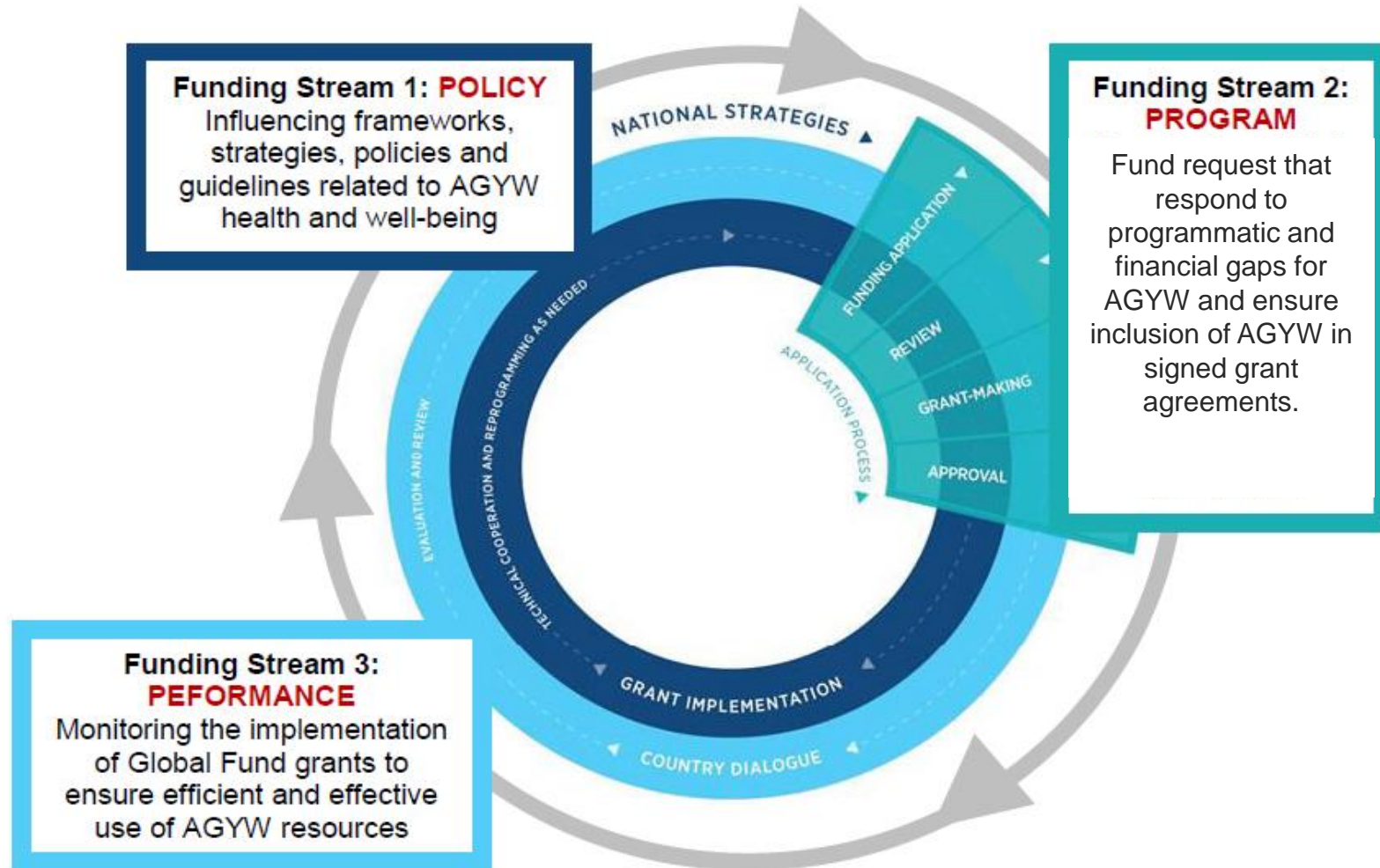
About Her Voice



The fund is expected to be officially launched in October 2017 and will channel small grants in an effective and efficient way to selected organisations or groups in 13 countries i.e. Botswana, Cameroon, Lesotho, Kenya, Malawi, Mozambique, Namibia, Swaziland, South Africa, Tanzania, Uganda, Zimbabwe, and Zambia.

How the Fund Works

Figure 2: Funding Stream Her Voice Model



Activities the Fund will support

Administrative costs related to organizing small scale meetings such as short term communication costs for organizing, venue/ meeting materials and meal costs related to a community consultation process at the community level; relevant for a Global Fund or related policy processes;

Travel and accommodation costs related to participation in constituency, community or national consultations relevant for Global Fund processes (preparation of funding request, program design, grant-making and monitoring of programs and reviews);

Travel and accommodation costs related to participation in relevant country processes such as policy making and reviews addressing adolescent and young women's health;

Internet costs (e.g. bundles) related to participation in online meetings or group chats related to community or national consultations or other information and experience sharing platforms relevant for Global Fund processes. This could include but not limited to participation in webinars;

Translation of documents for the purposes of understanding Global Fund and related processes in country, by adolescents and young women.

How to Apply for the Fund

Demand-Driven Model

- The Fund will predominantly operate on a demand-driven model, with an open call for applications in the 13 countries. The application form will be a short 1-2 page narrative template, indicating the relevant funding stream, the proposed activity/activities, and a summary budget.
- Her Voice Fund will avail small grants per funding stream. **Community based organisations/groups** will be eligible to apply. Organisations/groups can apply as many times as possible and for more than funding streams.
- All countries will be eligible to apply for all three funding streams throughout the 12-month duration of the project. *However, targeted demand creation and rapid support for specific countries will be prioritized at certain stages in the **2017-2019 funding cycle**.*
- No big binging contracts
- Work in progress
 - *Setting up a web page*
 - *Application tools, forms etc.*

IMMEDIATE NEXT STEPS

We require input from you

Mapping of potential AGYW organisations and CB groups in 13 countries – three sources of mapping;

1. CCM
2. Technical partners UN organisations etc.
3. Portfolio of civil society organisation already contact py the consortium
4. Government.

Working on the communication and reach strategy i.e.. mailing list, calls, web page internet etc.

CSOs Input Matters

Any questions/suggestions for the
AGYW Fund?

Contact Us



[SATRegional](https://www.facebook.com/SATRegional)



[@SATRegional](https://twitter.com/SATRegional)



[eannaso.org](https://www.facebook.com/eannaso.org)



[@eannaso.org](https://twitter.com/eannaso.org)

Contact info (SAT)



+27 (0)11 478 8300



www.satregional.org



info@satregional.org

Vicci Tallis

tallis@satregional.org

Contact info (EANNASO):



T: + +255 737 210598



www.eannaso.org



eannaso@eannaso.org

Mumba Olive

mumba@eannaso.org